



COUNTY OF WETASKIWIN No.10

Strong Proactive Leadership • Safe Progressive Communities

Phone 780-352-3321 Toll Free 1 (800) 661-4125
www.county.wetaskiwin.ab.ca

NOTICE OF PUBLIC HEARING

TAKE NOTICE that the County of Wetaskiwin No. 10 has prepared a proposed amendment to the County's Municipal Development Plan. The original County of Wetaskiwin Municipal Development Plan (MDP) was adopted in 2010, with the most recent amendment being adopted through Bylaw 2016/55. The Municipal Development Plan will be updated to align with the recent change to the County of Wetaskiwin Land Use Bylaw 2017/48, Section 10.3.2, Agricultural Hobby Farm District. The proposed change reads as follows:

Objective 1.2 Protect agricultural land to remain in production

1.2.2 Area structure plan or rezoning will not be considered if the land is classified as productive agricultural land as defined above except as allowed elsewhere in the Municipal Development Plan, or, if the proposed districting is to Agricultural Hobby Farm. If Agricultural Hobby Farm is the intended districting, then the thirty percent (30%) soil assessment restriction is increased to forty percent (40%).

A copy of the Municipal Development Plan can be obtained:

- By requesting a copy by email at wpermits@county10.ab.ca; or
- By viewing a copy at the County of Wetaskiwin Office.

Before proceeding further, Council will hold a Public Hearing at which any person claiming to be affected by the proposed amendment to the Municipal Development Plan may ask questions or make their views known. As per the *Municipal Government Act*, any person affected, has the right to petition this proposal.

In accordance with the *Municipal Government Act*, members of the public have the right to attend this meeting in person. However, Administration and Council are **strongly encouraging** and recommending that communication be through alternative methods such as email, mailed correspondence, fax or otherwise, rather than public attending the meeting in person. This will ensure that the information is presented to Council at or before the meeting and will also ensure the health and safety of all members of the public and County staff.

For individuals wishing to attend in person virtually for the aforementioned Council meeting, please contact Jeff Chipley, Assistant CAO at 780-387-6043 (cell) or at jchipley@county10.ca in order to make arrangements prior to the start of the meeting. No members of the public will be admitted into the building for the meeting.

The hearing will be held in the Council Chambers, County Office, 2.4 kilometres west of Wetaskiwin on Highway 13, at 9:45 a.m., Thursday, October 8, 2020.

Written submissions will be accepted up to the time of the hearing and should be addressed to the undersigned at the County Office, or emailed to wpermits@county10.ca.

Jeff Chipley, Assistant CAO, County of Wetaskiwin No. 10

APPLICATION FOR COUNTY LIBRARY BOARD MEMBER AT LARGE

The County of Wetaskiwin No. 10 Library Board requires one person from the general public to serve in the following volunteer position:

One (1) member, from the area from Highway 2A east to the County boundary, will be appointed for a three-year term November 1st, 2020 to October 31st, 2023.

The Board, subject to any enactment that limits its authority, shall have full management and control of the municipal library and shall, in accordance with the regulations, organize, promote and maintain comprehensive and efficient library services in the County of Wetaskiwin No. 10 and may cooperate with other boards and libraries in the provision of those services.

The Library Board consists of:

Three (3) members from the general public, along with two (2) County of Wetaskiwin Councillors, appointed at the Annual Organizational Meeting.

If you are interested in the above position, please provide a resume to the undersigned by October 15th, 2020.

Jeff Chipley, Assistant CAO, County of Wetaskiwin No. 10, Box 6960, Wetaskiwin, AB. T9A 2G5

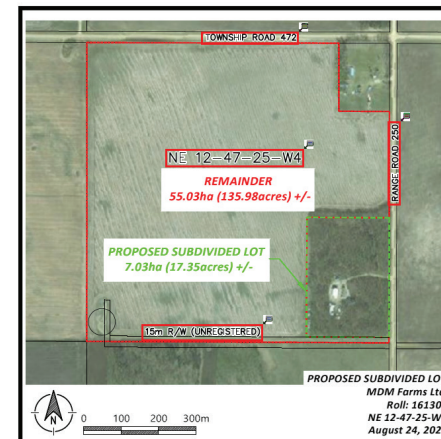
NOTICE OF PUBLIC HEARING

TAKE NOTICE that the Council of the County of Wetaskiwin No. 10 has been asked to adopt an Area Structure Plan within **NE 12-47-25-W4M**, for MDW Farms Ltd. on the following land which is located 4.18 kilometers south west of Highway 2A, South of Millet, as shown on the accompanying map.

Before considering the adoption of the Area Structure Plan, Council will hold a public hearing at which any person claiming to be affected by the proposed Area Structure Plan may ask questions or make their views known.

The hearing will be held in the Council Chambers of the County of Wetaskiwin Administration Building located 2.4 kilometres west of Wetaskiwin on Highway 13, at 9:15 a.m. on Thursday October 8, 2020.

In accordance with the *Municipal Government Act*, members of the public still have the right to attend this meeting in person virtually. However, Administration and Council are **strongly encouraging** and recommending that communication be through alternative methods such as email, mailed correspondence, fax or otherwise, rather than public attending the meeting in person. This will ensure that the information is presented to Council at or before the meeting and will also ensure



the health and safety of all members of the public and County staff.

For individuals wishing to attend in person virtually for the aforementioned Council meeting, please contact Jeff Chipley, Assistant CAO at 780-387-6043 (cell) or at jchipley@county10.ca in order to make arrangements prior to the start of the meeting. No members of the public will be admitted into the building for the meeting.

DAVID BLADES, A. Sc. T., LGA
Director of Planning & Economic Development
County of Wetaskiwin No. 10



RENEW YOUR PLAN, ACCESS FUNDING, REVITALIZE YOUR FARM

If your Alberta Environmental Farm Plan is more than ten years old, you will need to update it for your farm to be eligible for some funding programs. Renewing your plan gives you better access to markets and funding. With our new online platform and our network of trained technicians across Alberta, it is easy to update your environmental farm plan on a regular basis. Connect with us for more information at www.albertaefp.com