



COUNTY OF WETASKIWIN No. 10
Strong Proactive Leadership • Safe Progressive Communities

Phone 780-352-3321 Toll Free 1 (800) 661-4125
www.county.wetaskiwin.ab.ca



SEASONAL EMPLOYMENT - 2016

The County of Wetaskiwin has the following seasonal employment opportunities available:

AGRICULTURAL SERVICES

Job Posting #2016/02

Agricultural Services Labourer (2 available positions) – responsible for performing general maintenance for the Agricultural Service Board Department within the County of Wetaskiwin including mowing, weed eating, hand picking weeds and general duties as assigned. Must hold a valid Class 5 Operator's License.

Start: May 2nd, 2016 – August 31st, 2016

PARKS & RECREATION DEPARTMENT

Job Posting #2016/03

Parks Dept. (Groundskeeper) (2 available positions) – will be responsible for performing general Park maintenance for the County yard and the Parks and Recreational areas within the County of Wetaskiwin, including transporting picnic tables, cleaning fire pits, painting and grounds maintenance. Must hold a valid Class 5 Operator's License and will report to the County of Wetaskiwin Winfield Shop.

Start: May 2nd, 2016 – August 31st, 2016

ADMINISTRATION

Job Posting #2016/04

Administration Dept. - Front Counter/Receptionist – responsible for general receptionist duties, including cash receipting, word processing, mail processing, answering switchboard, accounts receivable, file and data maintenance.

Start: May 2nd, 2016 – August 31st, 2016

The following positions fall under the International Union of Operating Engineers Local 955 Collective Agreement:

AGRICULTURAL SERVICES

Job Posting #2016/05

Spray Truck Driver and/or Sprayer Operator (2 available positions) – will be responsible for operating the County of Wetaskiwin's spray truck, performing minor equipment repairs and ongoing regular maintenance of equipment including shop maintenance. Required to maintain accurate records of all areas sprayed, including chemicals used, rates of application and legal land locations. Must hold a valid Class 5 Operator's License.

Start: May 2nd, 2016 – August 31st, 2016

Job Posting #2016/06

Light Equipment Operator (Mower) (2 available positions) – will be responsible for operating the County of Wetaskiwin's roadside mower, including performing minor equipment repairs and ongoing regular maintenance of equipment including shop maintenance.

Will be a back-up spray truck operator when required, and will perform minor equipment repairs and ongoing regular maintenance of the spray truck. Must hold a valid Class 5 Operator's License.

Start: June 1st, 2016 – October 31st, 2016

Job Posting #2016/07

Weed Inspector (4 available positions) – will be responsible for carrying out weed inspections, grasshopper surveys and Blackleg in Canola surveys within the County of Wetaskiwin. Required to complete thorough and accurate documentation of areas surveyed and draft correspondence to landowners. Must hold a valid Class 5 Operator's License.

Start: May 2nd, 2016 – August 31st, 2016

PUBLIC WORKS

Job Posting #2016/09

Public Works Dept. - Labourer – seeking a summer Labourer working out of the Wetaskiwin County Shop. The successful candidate will perform general road maintenance duties for the Public Works Department including garbage pickup, pot hole repair, crack sealing, cutting brush, erecting signs, general and roadside cleanup as well as maintenance duties. Must hold a valid Class 5 Operator's License and will be responsible for providing your safety footwear.

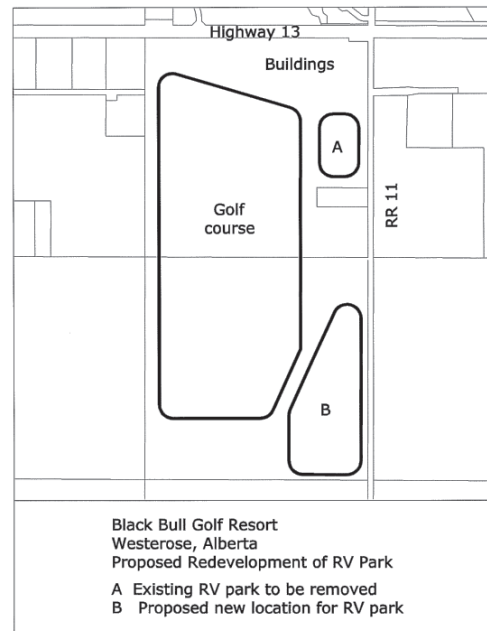
Start: May 2nd, 2016 – August 31st, 2016

For the above available Summer Employment positions please reference the Job Posting Number noted above. You may apply by completing a County of Wetaskiwin application form available for pickup at the County Administration Building, or apply online under the County of Wetaskiwin's website or forward your Resume and covering letter by 4:30 p.m. March 18th, 2016, marked "Seasonal Employment 2016" to:

Verna Lonsdale, Executive Assistant
 Box 6960, Wetaskiwin, AB, T9A 2G5
 Phone: 780-352-3321 or Fax: 780-352-3486
 Email: vlonsdale@county.wetaskiwin.ab.ca

We thank all applicants for their interest, however, only those chosen for an interview will be contacted.

NOTICE OF PUBLIC HEARING



TAKE NOTICE that the Council of the County of Wetaskiwin No. 10 has been asked to Repeal Bylaw 2014/34 for the Black Bull Golf Resort Area Structure Plan for the subdivision and development of a Recreational Vehicle Park on the following land as shown on the accompanying map.

NE 11-46-1-W5M

Before considering the request to repeal the Area Structure Plan, Council will hold a public hearing at which any person claiming to be affected by the proposed Area Structure Plan may ask questions or make their views known.

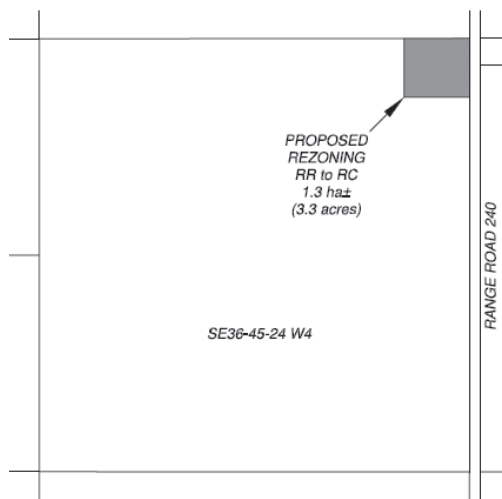
The hearing will be held in the Council Chambers, County Office, 1.6 kilometres west of Wetaskiwin on Highway 13, at 11:00 a.m., Thursday, March 10, 2016.

Written submissions will be accepted up to the time of the hearing and should be addressed to the undersigned at the County Office.

A copy of the proposed Plan may be picked up at the County of Wetaskiwin Administration Building or by contacting the Planning and Economic Development Department at (780) 352-3321.

DAVID BLADES, A. Sc. T., LGA
 Director of Planning & Economic Development
 County of Wetaskiwin No. 10

NOTICE OF PUBLIC HEARING



County of Wetaskiwin No. 10

Notice of proposed change in land use classification

TAKE NOTICE that the Council of the County of Wetaskiwin No. 10 has received an application to amend its Land Use By-Law by rezoning part of the following land, as shown on accompanying map, from **Rural Residential to Rural Commercial** Districting:

Part of SE 36-45-24-W4M

If the rezoning is approved, the applicant intends to rezone one (1) 3.3 acre parcel. A copy of the Rural Commercial District outlining permitted and discretionary uses can be obtained from the County Office.

Before proceeding further with the proposal, Council will hold a Public Hearing at which any person claiming to be affected by the proposed rezoning may ask questions or make their views known.

The hearing will be held in the Council Chambers, County Office, 1.6 kilometres west of Wetaskiwin on Highway 13, at 1:30 p.m., Thursday, March 10, 2016.

Written submissions will be accepted up to the time of the hearing and should be addressed to the undersigned at the County Office.

DAVID BLADES, A. Sc. T., LGA
 Director of Planning & Economic Development
 County of Wetaskiwin No. 10